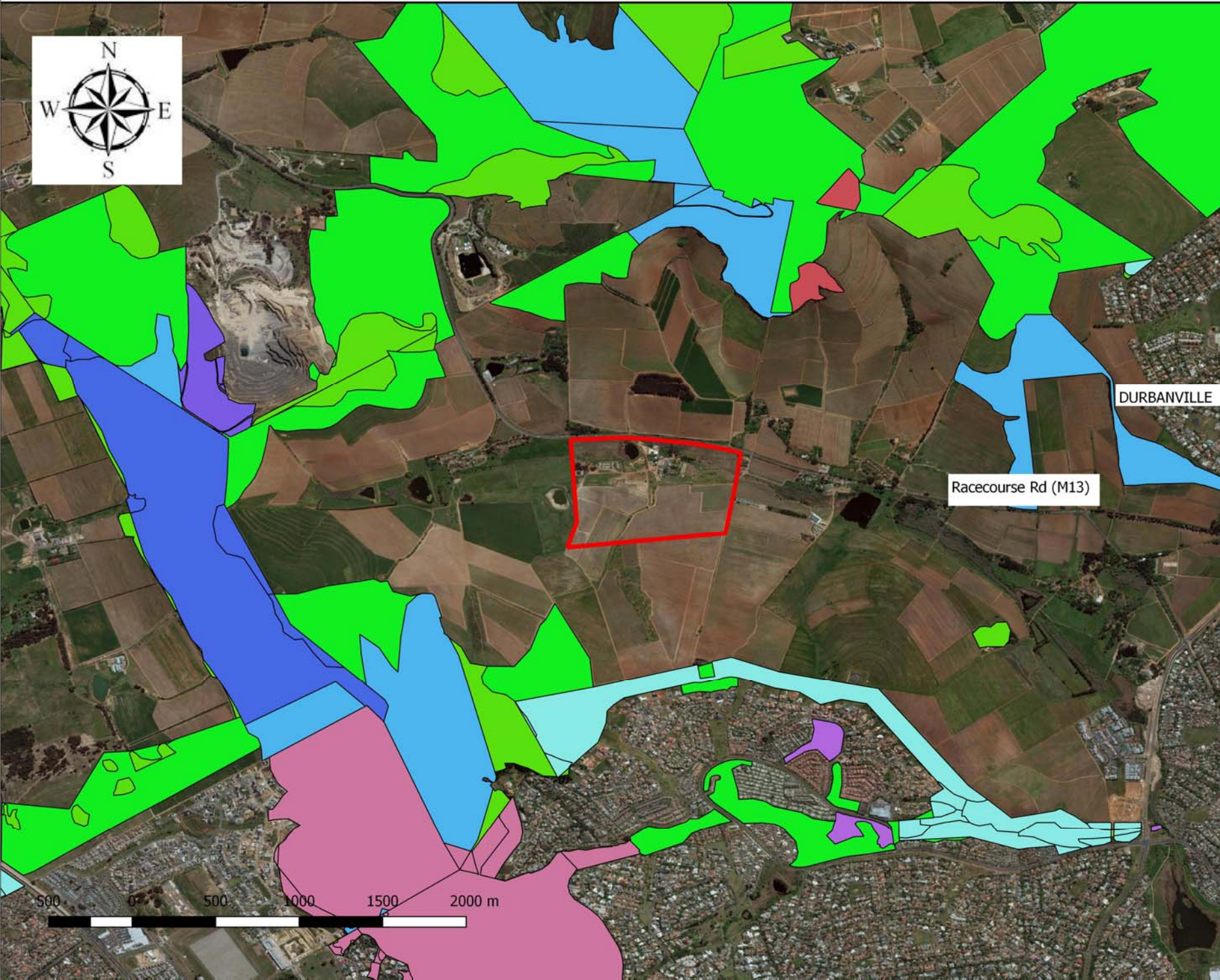


# THE UNLAWFUL INFILLING OF A CHANNEL ON PORTION 1 OF FARM NO. 1471, BLOEMENDAL.

## Biodiversity Overlay



### Legend

- BiodiversityNetwork
- CBA 1a
  - CBA 1b
  - CBA 1d
  - CBA 1e
  - CBA 2
  - CESA
  - Conservation Area
  - OESA
  - Protected: In Perpetuity
  - Protected: Not In Perpetuity
  - Portion 1 of Farm 1471

Site Coordinates:  
33°50'28.04"S  
18°36'03.19"E

Datum: WGS84  
Projection: Geographic

Scale: 1:18 000 (on A3)



Date: 16 January 2018

DJEC Ref. 2017/42

Prepared by:

DOUG JEFFERY  
Environmental Consultants (Pty) Ltd.